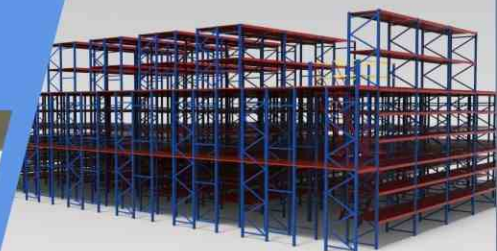




广东奇力智能设备有限公司
GUANGDONG ORION INTELLIGENT EQUIPMENT LIMITED

ORION
QUALITY CREATES VALUE



GUANGDONG ORION INTELLIGENT EQUIPMENT LIMITED
广东奇力智能设备有限公司

Factory ADD: No. 3 East Shengli Road, Pingzhou Industrial Park, Guicheng,
Nanhai District, Foshan City, Guangdong Province, China

工厂地址: 广东省佛山市南海区桂城平洲工业园胜利路3号

Mobile: +86-13424131725

Contact: Jasmine Zhao

Tel: +86-20-29842552

Skype: jasminezha0888 WhatsApp: +86-13424131725

E-mail: jasminezha0@orionrack.com

jasminezha0888@foxmail.com

Website: <http://www.orionrack.com>

<https://orionrack.en.alibaba.com>



Website



Sales Wechat

仓储货架
Storage Racking System

Web: <http://www.orionrack.com>

<https://orionrack.en.alibaba.com>

中国·广东

企业简介 ORION >>>

ENTERPRISE BRIEF INTRODUCTION



GUANGDONG ORION INTELLIGENT EQUIPMENT LIMITED has focused on the R&D, design, production, sales and after-sales service of high-quality warehousing and logistics equipment system solutions since 2003. Now we have become one of the leading suppliers in the racking system and storage equipment in China. Our products mainly include: pallet racks, medium-duty racks, light-duty racks, drive-in racks, radio shuttle racks, push-back racks, cantilever racks, mezzanine floor (steel platforms), mezzanine racks, carton flow racks, mould racks, tool cabinets, heavy duty workbench and other storage equipment.

We have two factories, located in Foshan and Dongguan City, Guangdong province. The total production is about 55000 square meters, and the annual production capacity is about 100,000 tons. We have more than 20 sets of rolling production lines, multiple sets of welding robots and 4 sets of fully automatic powder coating lines.

ORION has strong technical force and product development ability, more than 100 professional senior technicians, including 50 senior design and planning engineers, 27 project implementation engineers, and 15 professional after-sales service teams, providing customers with the most professional program design, to ensure the rapid response of customer site installation management and equipment use.

Through years of continuous efforts, our customers are all over the world, Now, we have become one of the largest and important providers in this field in Southeast Asia, Middle East, Australia, Europe, North America, South Africa and other overseas markets. We have extensive experience in supporting services for medium and large companies and have undertaken thousands of projects in both domestic and international markets. As a global supplier of warehouse racking systems and storage equipment, ORION creates added value for our customers worldwide.

广东奇力智能设备有限公司，成立于2003年。公司专注于高品质仓储物流设备系统方案的研发设计，生产，销售及售后服务，现如今已经成为中国优质货架系统和仓储设备行业的供应商之一。主要产品包括：横梁式货架、中型货架、轻型货架、驶入式货架、穿梭式货架、后推式货架、悬臂式货架、钢平台、阁楼货架、流利式货架、模具架、工具柜、重型工作台等物流设备。

奇力设有两家工厂，分别位于佛山和东莞。总生产面积约55000平方米，年生产力约10万吨。我们拥有20多套滚轧生产线，多套焊接机器人和4套全自动粉末喷涂线。

奇力具备雄厚的技术力量和产品开发能力，专业高级技术人员100多名，其中设计策划高级工程师50人，项目实施工程师27人，专业的售后服务团队15人，为客户提供最专业的方案设计，保障客户现场的安装管理和设备使用的快速响应。

经过多年的努力，我们的客户遍布全球，已成为东南亚，中东，澳洲，欧洲，北美等海外市场最大和最忠诚的供应商。我们拥有丰富的大中型企业配套服务经验，已在国内外市场承接了上千个项目。作为仓库货架系统和仓储设备的全球供应商之一，奇力为全球客户创造更多附加值。



奇力，品质缔造价值！

ORION, QUALITY CREATES VALUE!

我们的团队 OUR TEAM >>>

•With excellent technology and a serious attitude in every project , we providing the high-quality products and best service to all of our customers. What we pursue is not only honor, but also customer recognition.

•我们以过硬的技术，认真的态度抓好每一项工程项目，为我们的新老客户提供优质产品和服务！我们追求的不仅仅是荣誉，更是客户的认可。



Product symposium
产品研讨会



Shearing steel plate
剪板



Professional loading container team
专业装柜团队



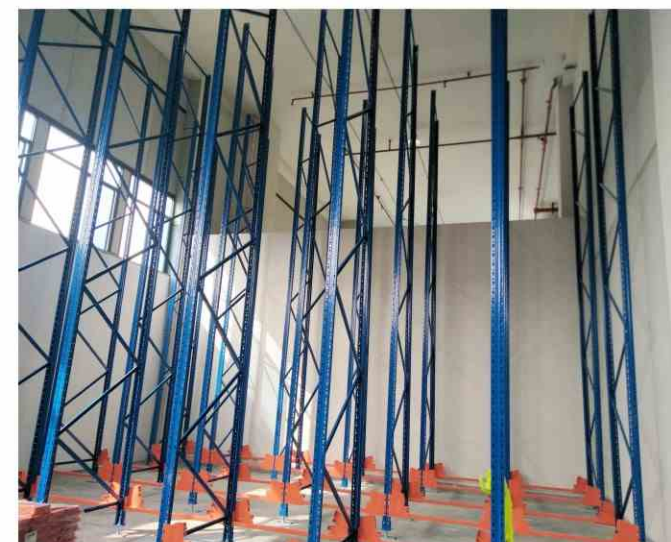
ORION certificate
奇力荣誉



Company regular meeting
公司例会



Customer project review meeting
客户专案讨论会



Installation of radio-shuttle racking
穿梭式货架安装



Factory office
工厂办公室

奇力 品质缔造价值



PRODUCTION EQUIPMENT

◎ 生产设备

• 20 Years Industry Experience, Profession Manufactory
 .pallet racks, medium-duty racks, light-duty racks, drive-in racks, radio shuttle racks, push-back racks, cantilever racks, mezzanine floor (steel platforms), mezzanine racks etc.

• 20年行业经验，专业生产厂家
 • 横梁式货架、中型货架、轻型货架、驶入式货架、穿梭式货架、后推式货架、悬臂式货架、钢平台、阁楼货架等。



The warehouse of finished goods
成品仓



Raw material zone
原料间



Punching machine
冲床



Bending machine
折弯机



Automatic welding machine
自动焊接机



Painting line
喷涂线



Pickling treatment
酸洗

ORION RACK

YOUR WAREHOUSE SPECIALIST



目录/CONTENTS

- 09 Automated Warehouse AS/RS System
自动化立体仓库
- 13 Pallet Rack
横梁式货架
- 17 Medium duty & Heavy duty rack
中型货架和重型货架
- 21 Multi-tier Rack (Mezzanine rack)
阁楼式货架
- 23 Steel Platform (Mezzanine Floor)
钢平台
- 25 Double-Deep Pallet Rack
双深度货架
- 27 Very Narrow Aisle Rack
自窄巷式货架

- 29 Drive-in Rack
驶入式货架
- 31 Radio-Shuttle Rack
穿梭式货架
- 33 Flow Through Rack
流利式货架
- 35 Push-back Rack
后推式货架
- 37 Gravity Rack
重力式货架
- 38 Factory Partition
网墙隔断
- 39 Cantilever Rack
悬臂式货架
- 41 Mold Rack (Slid Rack)
抽屉式模具架
- 43 Platform Dock Leveler
货台高度调节板
- 44 Mobile boarding bridge
移动登高桥
- 45 Supermarket Rack
超市货架
- 47 Mobile File Cabinet
移动密集柜
- 49 Book Shelf
书架
- 51 Our Customers
合作客户
- 52 Rack Test
货架测试
- 53 CE Certificate
CE证书

AUTOMATED WAREHOUSE AS/RS SYSTEM

◎ 自动化立体仓库AS/RS系统

• Adopt the equipment such as lane stacker, inlet and outlet conveyor, apply the advanced automation system hardware equipment and software products to automatically realize the continuous transmission of goods, data storage management and inlet and outlet management. It has the characteristics of improving the level of warehouse automation and management, and improving the efficiency of logistics.

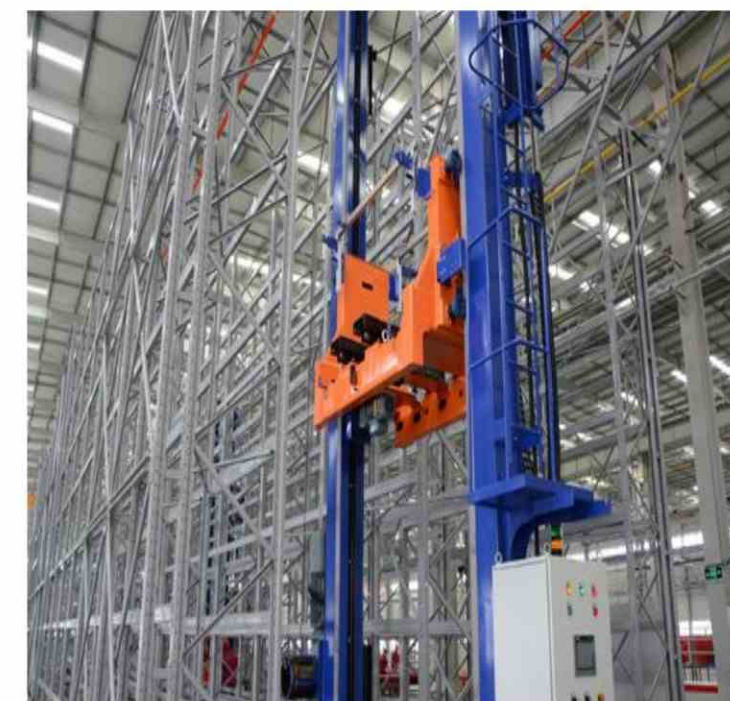
• 采用巷道堆垛机，出入库输送机等设备，应用先进的自动化系统硬件设备及软件产品，自动实现货物连输，数据的存储管理和出入库管理。具备提高仓储自动化水平及管理水平，提高物流效率等优点。



Automated warehouse ASRS system 自动化立体仓库ASRS系统



Automated warehouse
ASRS system
自动化立体仓库ASRS系统



Stacker
堆垛机



Heavy duty stacker
重载堆垛机



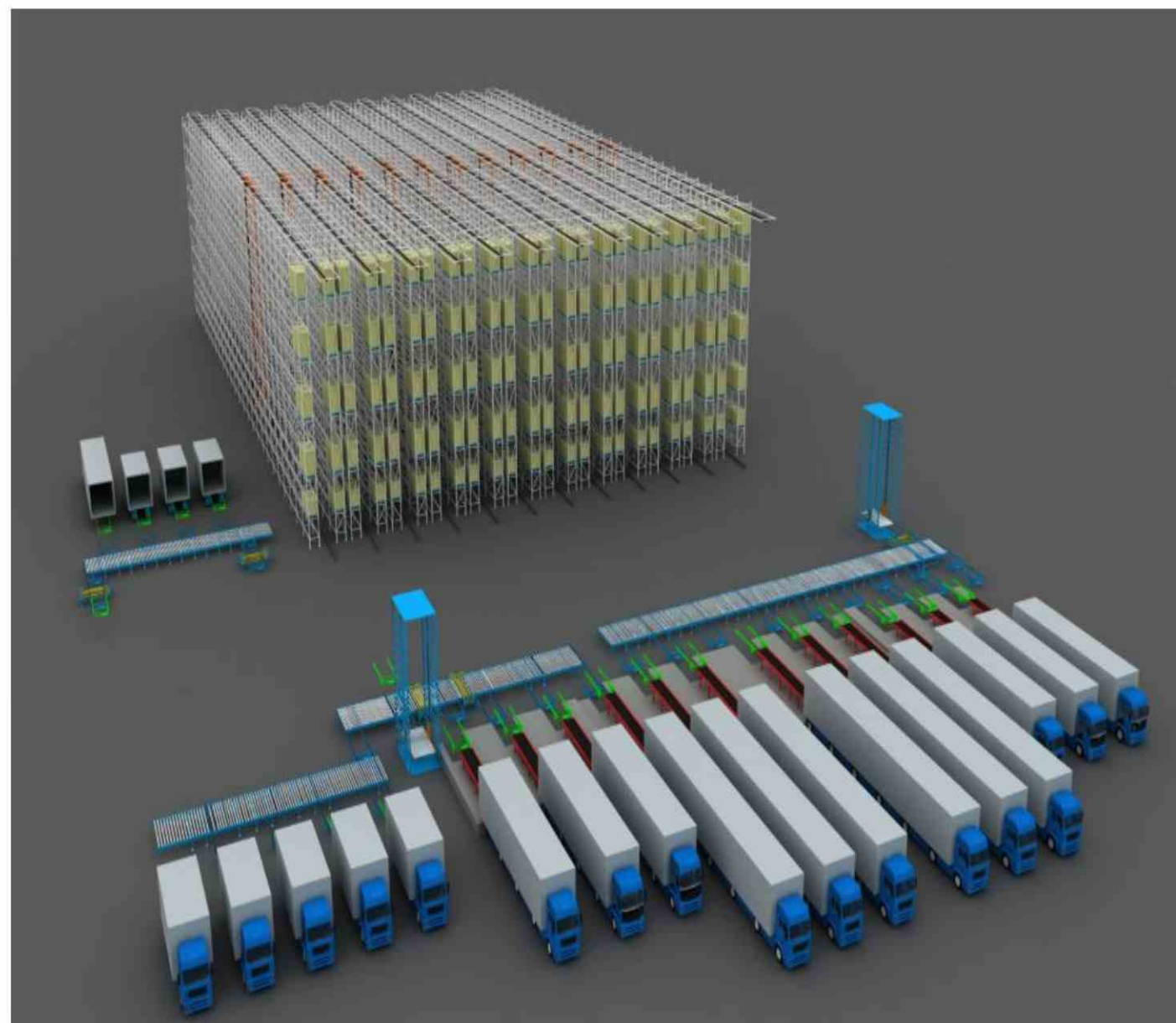
Light-duty High-speed
Aluminum Alloy Stacker
轻型高速铝合金堆垛机

AUTOMATED WAREHOUSE AS/RS SYSTEM

◎ 自动化立体仓库AS/RS系统

•The automated warehouse AS/RS system is widely used in almost all industries. The main industries of application are machinery, metallurgy, chemical, aerospace, electronics, medicine, books, food processing, tobacco, printing, distribution centers, airports, ports, etc.

- 自动化立体库应用广泛，几乎遍布所有行业。
- 应用的行业主要有：机械，冶金，化工，航空航天，电子，医药，图书，食品加工，烟草，印刷，配送中心，机场，港口等。



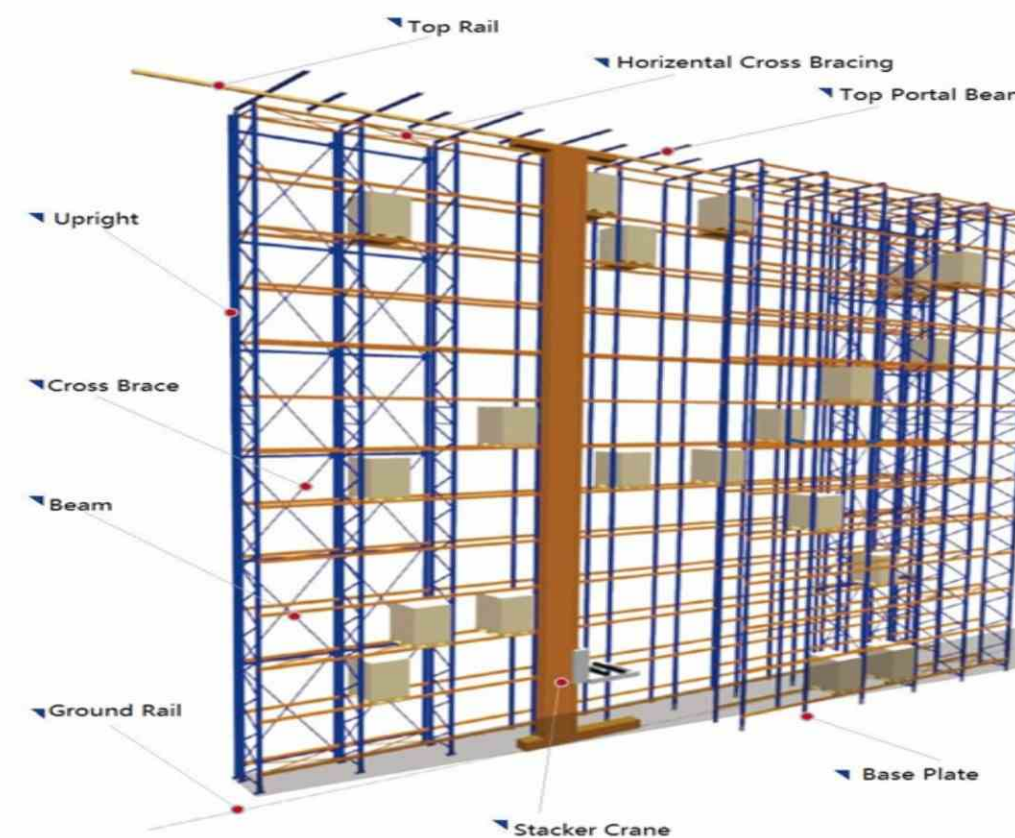
Automated warehouse ASRS system 自动化立体仓库ASRS系统



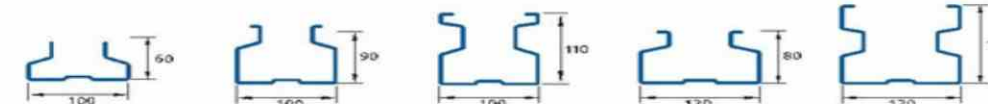
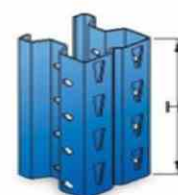
Management Information System
管理信息系统



AGV Car
AGV 小车



Upright



Material : SS400/Q235B

Asrs-High-Rise-Racking-for-Warehouse-Automation

SELECTIVE PALLET RACK

◎ 横梁式货架

• It is the simplest and most effective diversified storage racking, where goods are placed on pallets and stored on the racks by forklift. It has the characteristics of flexible and fast access operation, strong selectivity, FIFO, and a high turnover rate. The specification of the rack can be customized according to different spaces and goods.

• 最简单有效的多元化仓储货架,用于将货物放置在托盘上配合叉车使用存储,存取操作灵活快捷,选择性强,可先进先出,周转率较高,1T-5T/层,货架规格可以按照不同的空间,货物量身定制。



Structural features:

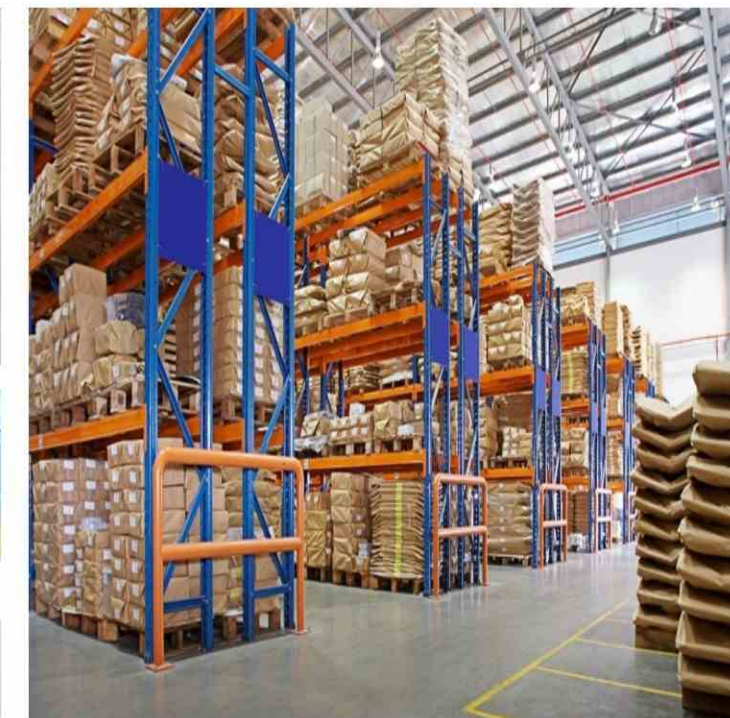
- All composite structure, it is easy and fast to assembling, flexible application.
- The spacing between the holes of the upright pitch is 75mm, and the layer spacing can be adjusted flexibly according to the height of the goods.

结构特点:

- 全组合式结构,拆装简便快捷,应用灵活。
- 立柱设计有每75MM可调孔距,可根据货物高低灵活调节层间距。



Basic structure of pallet rack unit
横梁式货架基本结构



PALLET RACK 横梁式货架

Design rack's factor:

- Weight of goods (include pallet or container);
- Dimension of pallet and goods(W*D*H);
- Fork entry direction of pallet ;
- Storage area(Length, Wide, Height) or your warehouse construction CAD drawing;
- How many layer of beams for each rack ;
- The load capacity of each layer for the rack;

货架设计要素:

- 货物的重量 (包括托盘或料箱);
- 托盘及货物的尺寸 (宽*深*高);
- 托盘的进叉方向;
- 存储区域 (包括长, 宽, 高) 或是您的仓库CAD建筑图纸;
- 每个货架要多少层横梁;
- 货架的每层承重是多少;



Case of pallet rack 横梁式货架案例



Post protector 护脚



Anti-collision fence 防撞栏



Upright post 立柱



Box beam 横梁



Pallet rack 横梁式货架



Wire mesh decking 网层板

MEDIUM-DUTY & HEAVY DUTY RACK

◎ 中型和重型货架

- The Medium duty rack is a full combination structure, with detachable and adjustable, easy to disassemble and install, beautiful appearance, stable and durable characteristics, and specifications can be customized according to the actual needs of customers.
- The load capacity of each layer is : 300kgs to 3000kgs.
- The medium duty rack is suitable for manual access to lighter and scattered goods.
- The heavy duty rack is suitable for some heavy goods to storage with pallet.
- The upright posts are equipped with an adjustable hole spacing from 50mm to 75mm each , so that the layer spacing can be adjusted flexibly according to the height of the goods.
- There are mainly three kinds of layer board: steel decking , plywood decking & wire mesh decking.

•中型和重型货架为全组合式结构，可拆可调，拆装简便快捷，外型美观，稳固耐用，规格尺寸可按照客户实际需求订制。

•承重为300kgs~3000kgs每层。

•中型货架：适用于人工存取较轻的零散货物。

•重型货架：适用于托盘存放的一些重型货物。

•立柱各设有50mm~75mm可调孔距，使层距可根据货物高度灵活调节。

•层板主要有三种：钢层板、木夹板、网层板。



Medium-duty rack with divider
轻中型货架带分搁板



Medium duty racking parts details
中型货架细节图



Rack with plywood decking
货架铺木夹板



Rack with steel decking
货架铺钢层板

Beam connection

The paint surface has been treated with high temperature of 200 degrees Celsius, electrostatic spray treatment, corrosion and rust prevention, solid and reliable.



Safety pin

Used to fix the stability of column and beam, prevent the beam from slipping due to improper operation

Details structure of racks
货架细节图



Rack with back wire mesh
货架带背网

MEDIUM-DUTY & HEAVY DUTY RACK

◎ 中型和重型货架

- Using upright frames and beams hanging structure, easy to disassemble and assemble, each layer can be adjustable every 50mm longitudinally.
- The load capacity of each layer is 200-1000kgs. The beams span can be up to 2400mm.
- There are mainly three kinds of layer board: steel decking, plywood decking & wire mesh decking.
- It is suitable for manual storage of small goods.

- 采用立柱片与横梁挂接结构，拆装方便，层板50mm可调。
- 每层载重可达200-1000kgs. 货架跨度可达2400mm.
- 层板可选用钢层板，木层板（夹板，中纤板，实木板）及网层板等。
- 适用于人工存储小件货物。



Upright frame 立柱片



Steel decking 钢层板



EXTRA STRONG 80MM UPRIGHTS
COMPARED TO 50MM SUPPLIED BY
MOST OTHER SUPPLIERS

Upright post 立柱



Box beam 横梁



Light-duty rack 轻型货架



Light-duty rack sample 轻型货架



Light-duty rack sample 轻型货架



Box beam connect with upright post
横梁与立柱连接



Medium-duty rack 中型货架



Medium-duty rack 中型货架



Medium-duty rack (butterfly hole)
蝴蝶轻中型货架



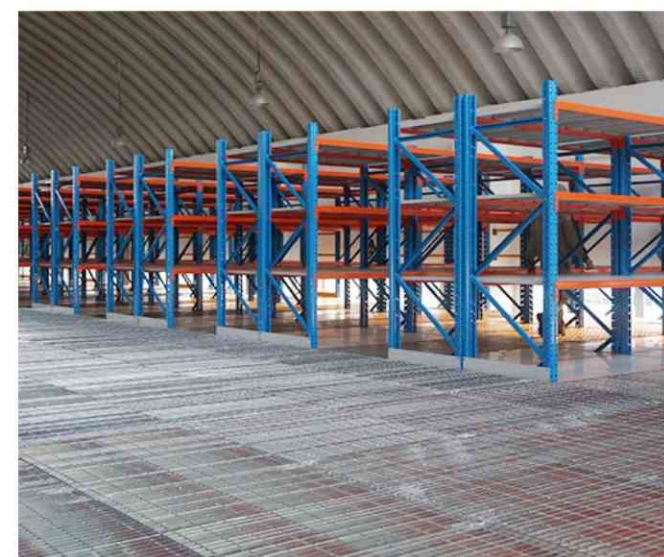
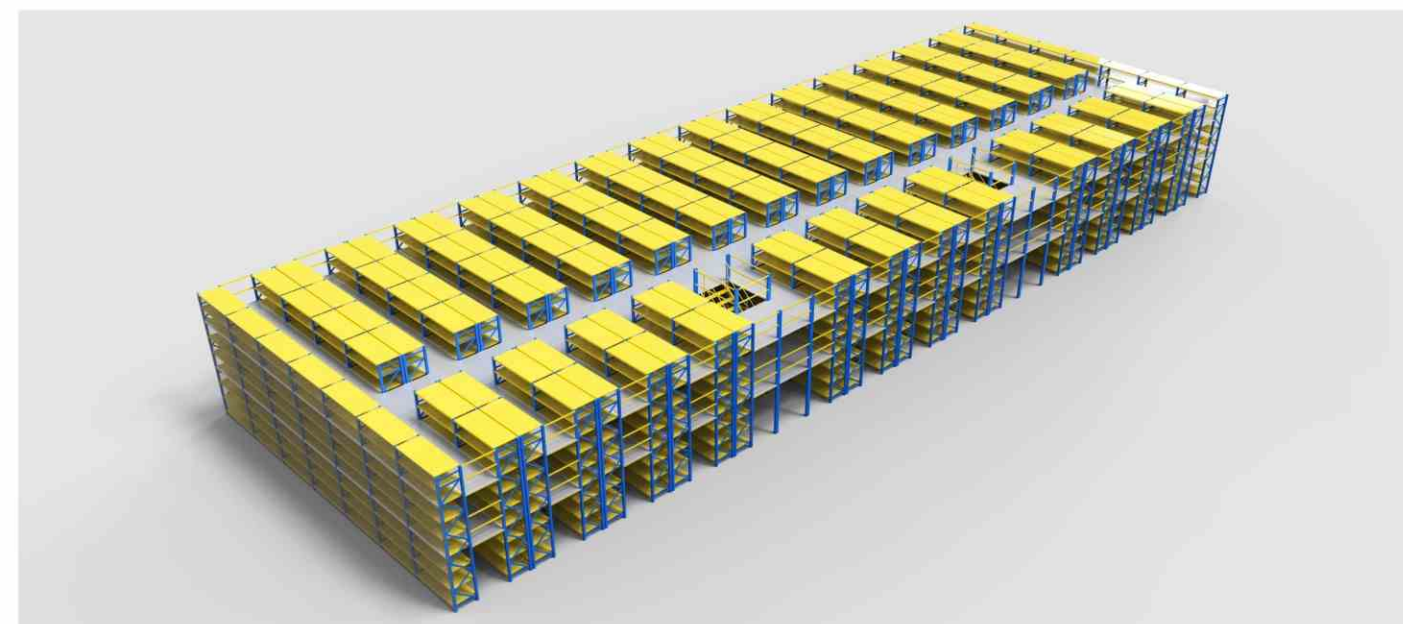
Case of medium-duty rack
轻中型货架案例

MULTI-TIER RACK (MEZZANINE RACK)

◎ 阁楼式货架

- Usually use Medium-duty rack or heavy duty pallet rack to do the main part.
- With a forklift or hydraulic lifting platform to transport goods up and down .
- Muti-tier rack is the most simple and efficient way to save storage space.

- 通常使用中型层板式货架或重型横梁式货架做主体。
- 配合叉车或液压平台上下货物。
- 多层阁楼式货架是节省存储空间最简单高效的方式。



Mezzanine rack sheet with steel grating
阁楼式货架铺钢格板



Different type floor panel for Mezzanine



Discharge gate



Sliding stair



Mezzanine rack basic structure
阁楼式货架基本结构



Case of Mezzanine rack 阁楼式货架案例



Case of match staircase 配合楼梯案例

COMBINED TYPE PLATFORM (MEZZANINE FLOOR)

◎ 钢平台

- Doubly make use of ground space, increase the utilization of the space and reduce the operation cost.
- According to the warehouse space, can be design the average span (3000-6000mm).
- The load capacity can reach 1000KGS/m².
- The sectional platform can work in high efficiency combined with lift platform.
- The 4 sides of floor match with the handrail, match with stair.
- Platform panel can be used plywood, steel gusset plate or steel grating.
- With aesthetic appearance, structural stability and detachable.

- 双倍的利用地面空间，提高空间利用率，降低运营成本。
- 可根据仓库空间设计平台跨度（3000-6000mm）。
- 最大承受重量可达到1000KGS/m²。
- 通常搭配升降平台使用上下货。
- 楼面四周配防护栏，并配置方便上下走动的楼梯。
- 平台面板可选用木夹板，钢扣板或钢格板。
- 整体美观，结构稳固，并可拆卸。



Steel structure & big span platform
钢结构大跨度平台



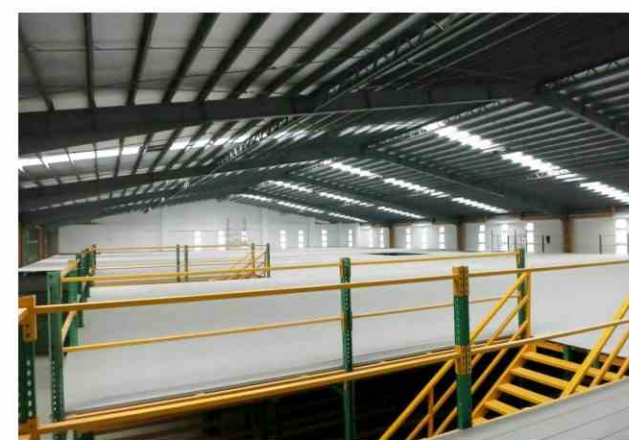
Different type floor panel for Mezzanine



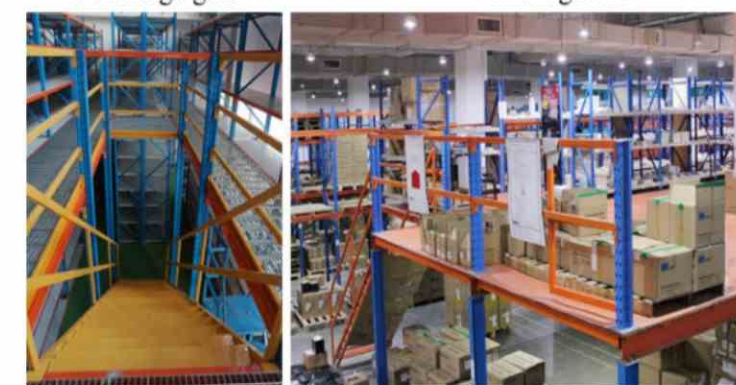
Discharge gate



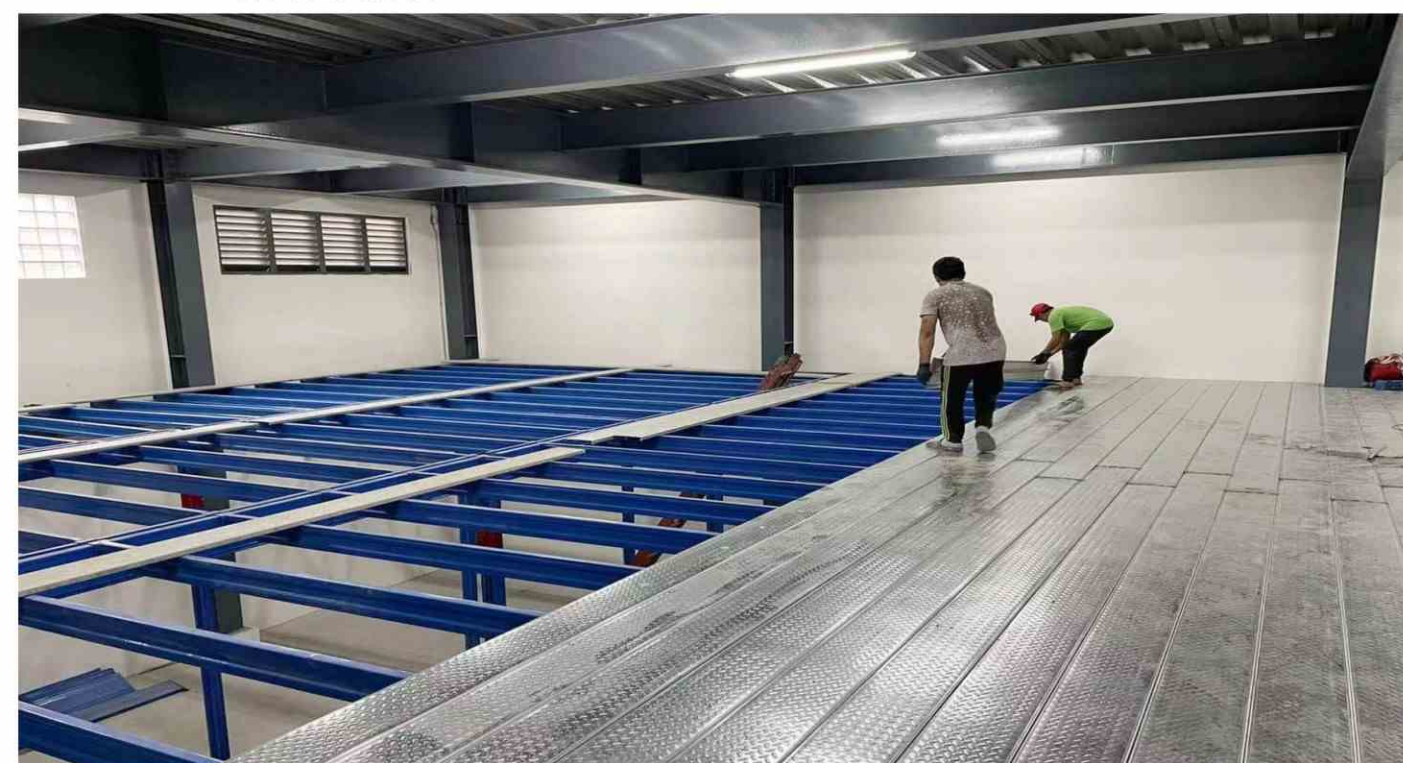
Sliding stair



Mezzanine floor sheet with steel gusset plate
钢平台铺钢扣板



Mezzanine floor basic structure 钢平台基本结构



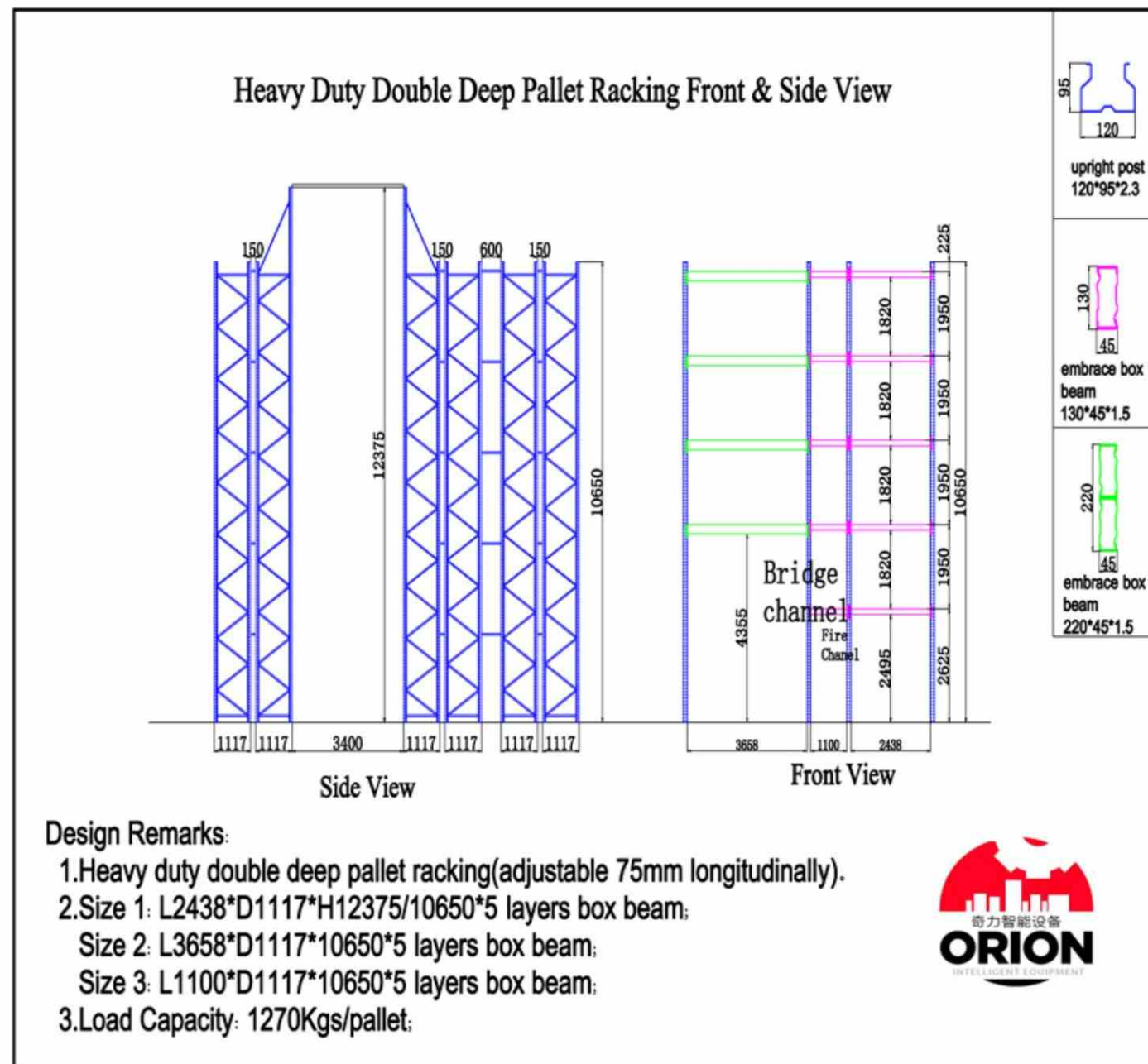
Case of mezzanine floor 钢平台案例

DOUBLE-DEEP PALLET RACK

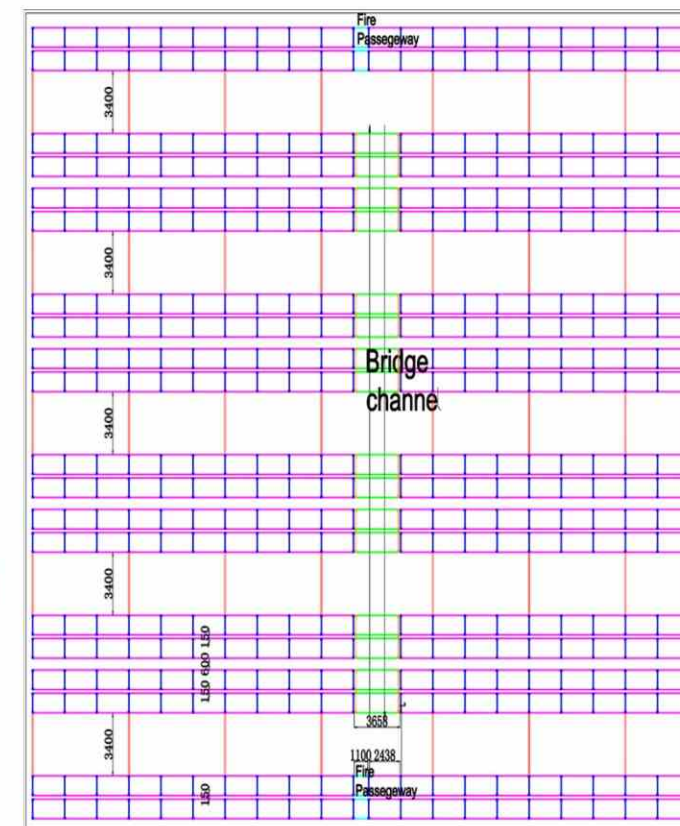
◎ 双深度货架

- Double-deep pallet rack is derive from pallet rack, the goods are constructed to store two pallets deep.
- The rack requires using special forklift with telescopic arm access to goods.
- This design effectively reduces the operations channel of forklift to increase the storage capacity.

- 双深度货架是横梁式货架的衍生类型，货物沿货架深度方向双重摆放。
- 必须使用带伸缩叉臂的特殊叉车存取货物。
- 此货架设计有效的减少了叉车作业通道，进一步增大存储量。



Project of double deep rack
双深度货架项目



Case of double deep pallet rack layout
双深度货架案例



Double deep rack
(with special forklift use)

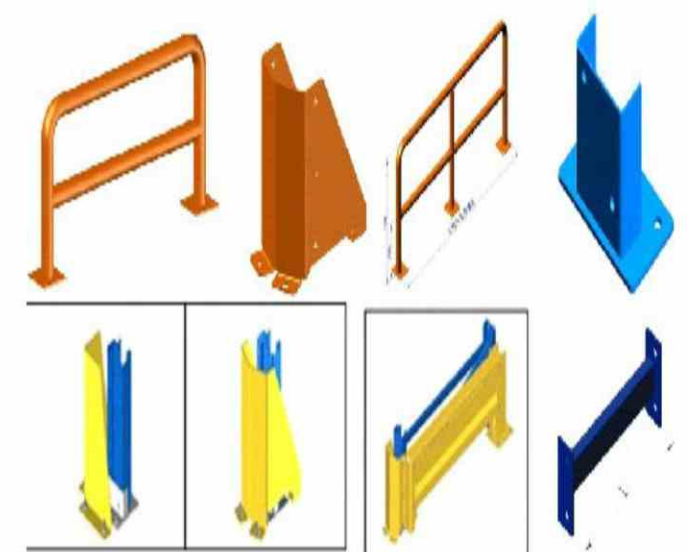
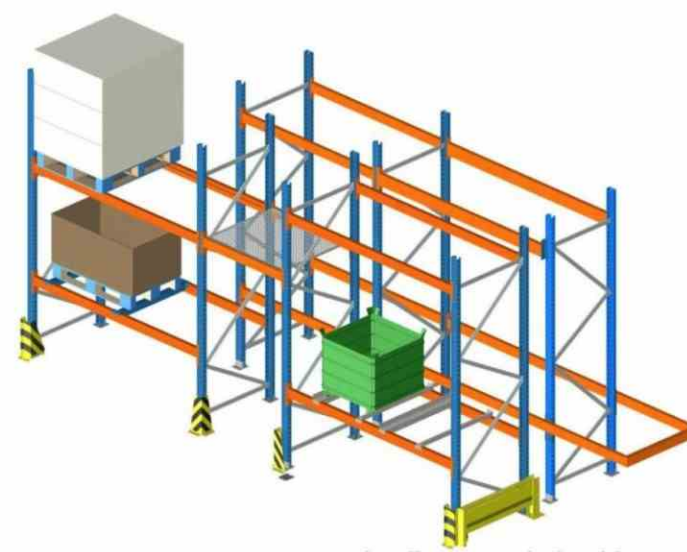


VERY NARROW-AISLE RACK

◎ 窄巷式货架

- Very narrow-aisle rack must be equipped with three-way forklift for storage operations.
- The rack height up to 14 meters. Its channel is only slightly wider than the forklift.
- Making full use of warehouse space for highly intensive storage.

- 窄巷式货架必须配备三向叉车进行存储作业。
- 最高可达14米。其巷道仅比叉车稍宽。
- 能充分利用仓库空间进行高密度存储。



Very narrow aisle rack 3 D view
窄巷式货架 3 D 效果图

Basic components of very narrow aisle rack
窄巷式货架基本配件

DRIVE-IN RACK

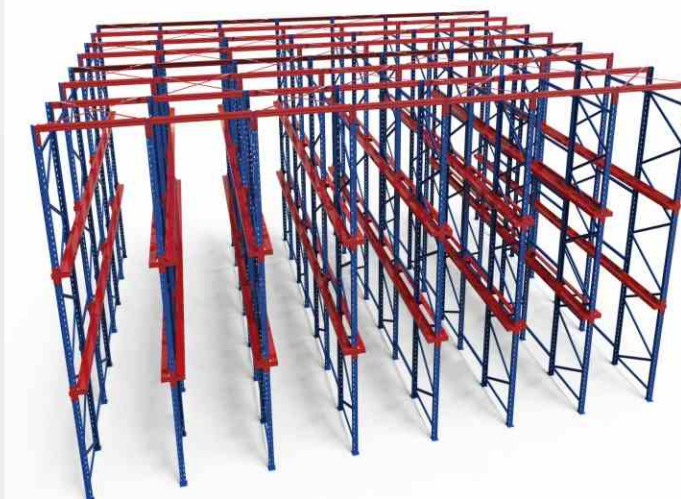
◎ 驶入式货架

- The drive-in rack is suitable for storing the same type of goods with few varieties and large batches, and the space utilization rate is high.
- The forklift enters the aisle of the racks to access the goods.
- The goods can be accessed from the same side, or stored on one side and taken out from the other side, realizing the first-in-first-out and first-in-last-out storage methods.

- 驶入式货架适用于存储品种少，批量大的同类型产品，空间利用率高。
- 叉车进入货架巷道内存取货物。
- 货物可由同一侧存取，也可一侧存入另一侧取出，实现先进先出及先进后出的存储方式。



Drive-in rack project 驶入式货架案例



Drive-in rack project 驶入式货架案例



Drive-in rack project 驶入式货架案例



corbel with double face

Rails on corbels



Single corbel

6 hanger for corbel

Middle corbel

Basic structure of drive in rack
驶入式货架基本结构



Drive-in rack project 驶入式货架案例



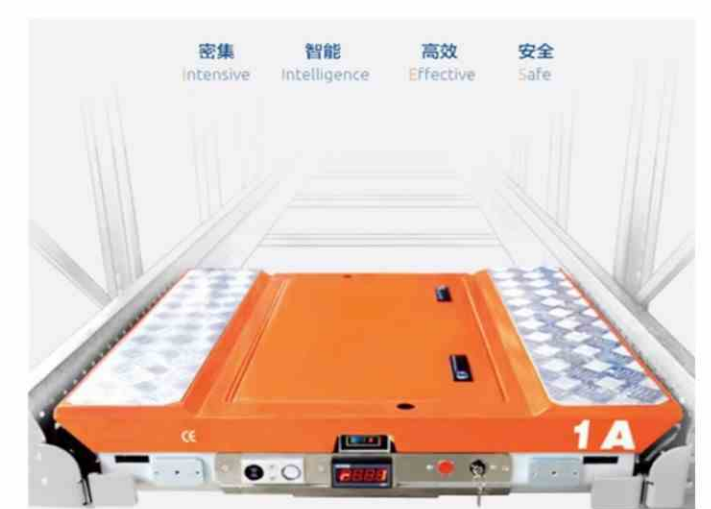
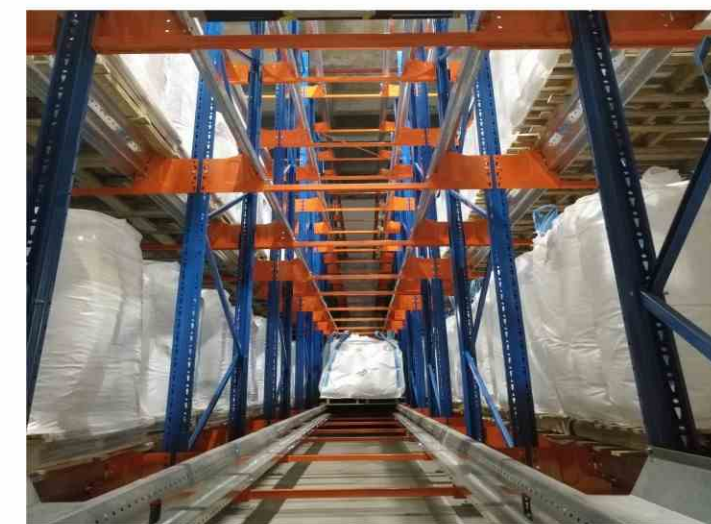
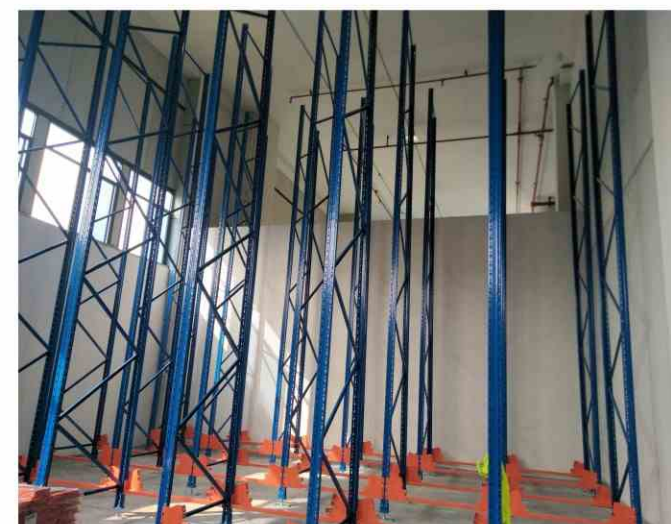
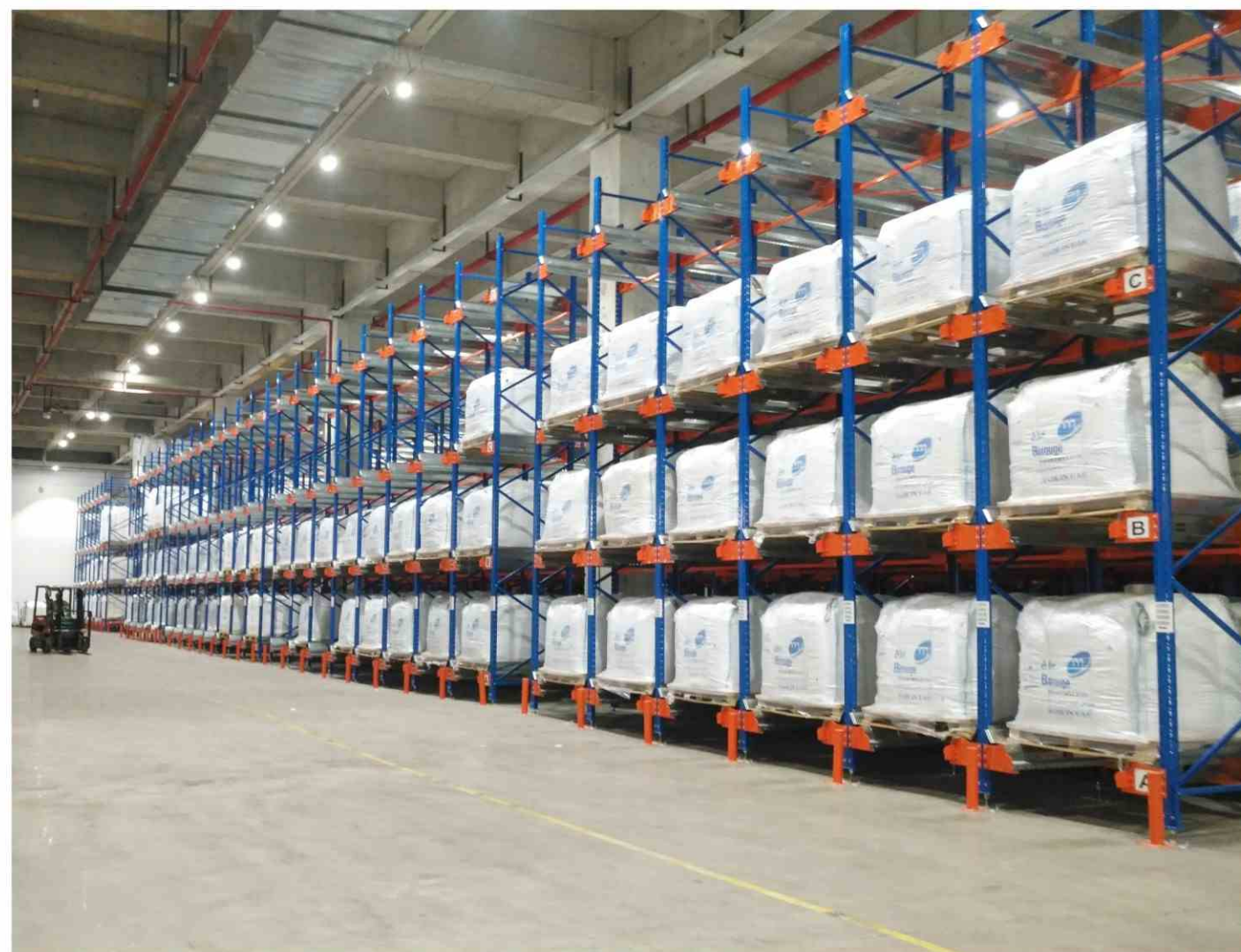
Drive-in rack project 驶入式货架案例

RADIO-SHUTTLE RACK

◎ 穿梭式货架

- The Radio shuttle rack consists of three parts: racks, shuttle, and forklifts.
- It is a high-density pallet storage system that relies on the shuttle to stack itself in the rack rails.
- Radio shuttle racks are suitable for a large number of goods with a small varieties, such as food, chemicals, tobacco and other industries with large quantities of single items and relatively single items.
- Especially in cold storage, compared with drive-in racks, Radio shuttle rack does not require the forklifts drive in to access the goods, which greatly improves efficiency, and can be designed with greater depth and denser storage, which greatly saves space and labor costs.

- 穿梭式货架系统由货架、穿梭车、叉车三部分构成。
- 它是依靠穿梭车在货架轨道中自行堆码的高密度托盘存储系统。
- 穿梭式货架适用于多量少样的货品，如食品、化工、烟草等单品种批量大，物品相对单一的行业。
- 尤其冷库中极受欢迎。跟驶入式货架相比，穿梭式货架存取无需叉车驶入，效率极大提高，并可设计进深更大，存储更密集，极大节省空间及人力成本。

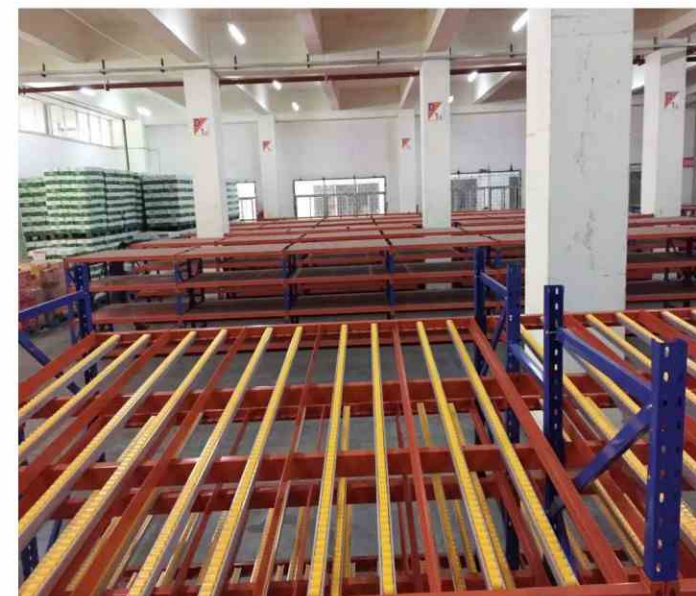


FLOW THROUGH RACK

◎ 流利式货架

- Flow through rack is combination of fully combined rack and roller-type fluent strips.
- The goods slide down by their own gravity to ensure that the goods are stored in the order of first in first out.
- It is suitable for production line workstations and logistics distribution centers, easy to access, save space, and improve efficiency.

- 流利式货架采用全组合货架与辊轮式流利条相结合。
- 货物依靠自身重力向下滑动，保证货物按照先进先出顺序存放。
- 适合于生产线工位及物流配送中心，存取简便、节约空间、提升效率。



PUSH BACK RACK

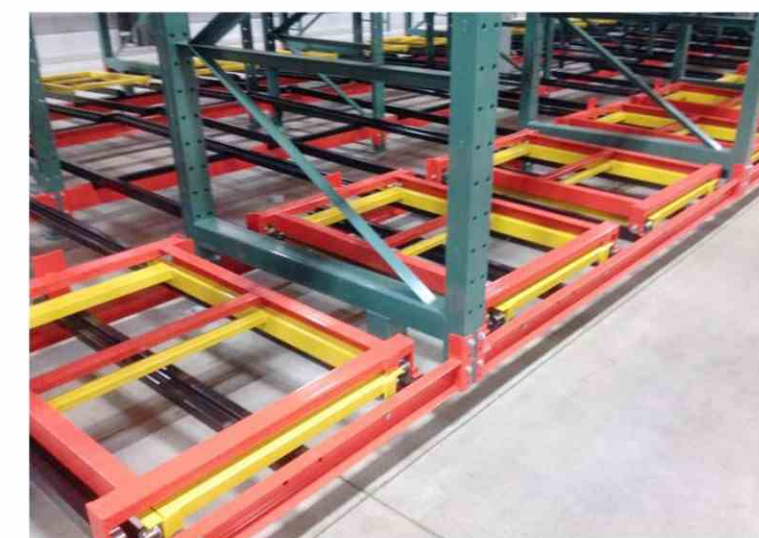
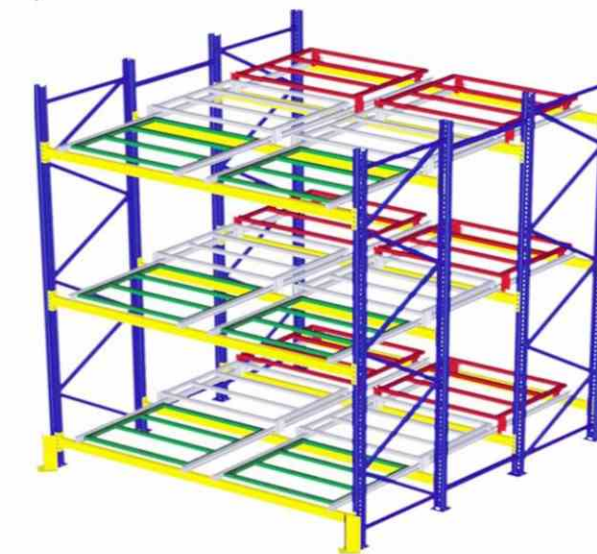
◎ 后推式货架

• Push-back racks are also called press-in racks, which are composed of pallet racks, tracks, and trolleys.

• The trolleys are arranged in a nested arrangement and run on a track with a set inclination angle, the goods that enter later will push the goods that enter first in order. When picking up the goods, take the outermost pallet first. When the goods on the outside are taken out, the goods inside will automatically slide down due to gravity. Implement first-in, last-out storage.

• Compared with drive-in racks and double-depth pallet racks, push-back racks have the advantage of convenient access to goods. The storage depth of this kind of racks is suitable for 2-4 pallets, and the deepest can reach 5 pallets.

• 后推式货架也叫压入式货架，由横梁式货架、轨道、台车等组成。
• 台车采用嵌套式布置在设定斜角的轨道上运行，后入的货物依次将先入货物推进里面，取货时先取最外边托盘，当外侧货物被取出时里面货物会受重力自动下滑，实现先进后出式存储。
• 与驶入式货架、双深度横梁式货架相比，后推式货架具有存取货物方便的优势，此种货架存储进深以2-4个托盘为宜，最深可达5个托盘。



GRAVITY RACK

◎ 重力货架

- Gravity rack is the derivative type of the pallet rack .
- It adopts a roller track or a bottom wheel tray, and the track is sloped (about 3°), and the first-in first-out of the goods is realized by using the self-gravity of the goods.
- It is suitable for storage the large quantities and same type of goods. The space utilization rate is very high, especially suitable for storing goods that have a certain warranty period and are not suitable for long-term backlogs.

- 重力式货架是横梁式货架的衍生类型。
- 采用滚筒式轨道或底轮式托盘，轨道呈坡度（3°左右），利用货物的自重，实现货物的先进先出。
- 适用于大批量、同类型货物的存储作业，空间利用率很高，尤其适用于储存有一定质保期、不宜长期积压的货物。



FACTORY PARTITION

◎ 网墙隔断

- Applied to separate the different work area, effectively improving the working environment and planning the space reasonably.
- Separated modular components, unified and beautiful.
- Upright posts are connected with the ground by bolts, which is safe and stable, and easy to disassemble and assemble.

- 厂房、车间规范隔离，有效改善作业环境，合理规划空间；
- 模块化组件，统一且美观；
- 立柱与地面以螺栓连接，安全牢固，拆装简便

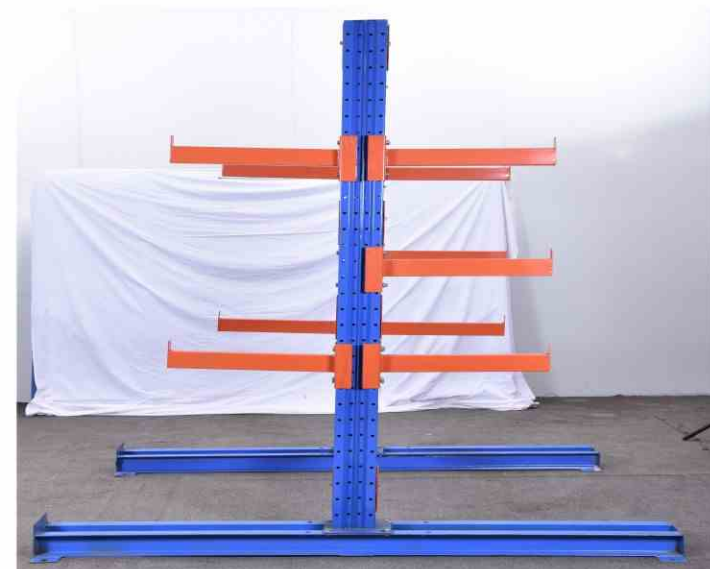


CANTILEVER RACK

◎ 悬臂式货架

- Cantilever Rack is combined structure, suitable for long materials, ring materials, plates, pipes.
- According to the load capacity, it can be divided into light, medium and heavy types.
- According to the structure, it can be divided into single-sided and double-sided types.

- 采用组合式结构，适用于长物料、环状物料、板材、管材。
- 根据承载能力可分为轻、中、重型。
- 根据结构可分为单面、双面型。



Cantilever connect with Post



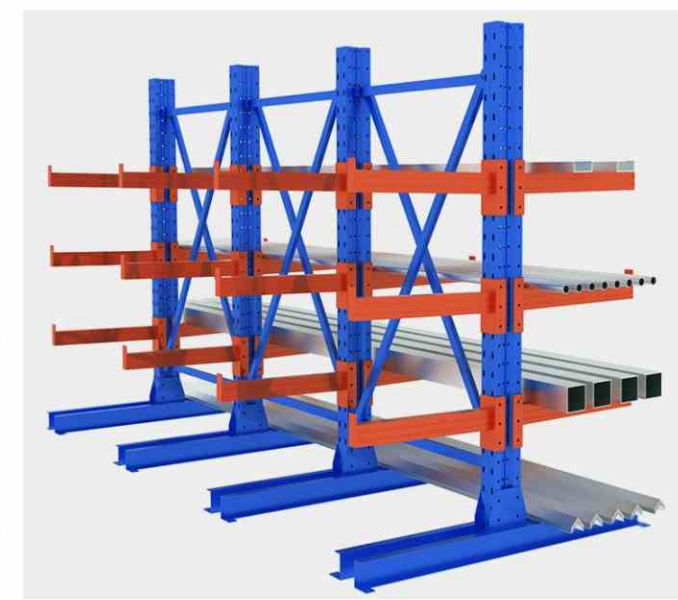
Base plate



Cantilever connect with Post



Cantilever



MOLD RACK

◎ 模具架

• Mold rack is mainly used to store various molds, steel materials, motors, engines and other heavy objects; it saves space and can store dozens of sets of small and medium-sized molds with an area of only 1.8 square meters, which is convenient for management, search and maintenance;

• drawer-type mold rack adopts bearing combination, and each drawer can be pulled out separately by 60%-100%, and the height can be adjusted freely every 50mm longitudinally. So that, each layer of drawers can be increased or decreased, and the number of grids can be connected unlimited

• The load capacity of each drawer is : 200-3000kgs.

• The top is equipped with a left and right mobile crane frame and an additional hoist, it can independently lift the mold without a large crane or forklift, which saves time and effort; it is assembled from a variety of parts, the structure is simple, and it is easy to disassemble, transport and install;

• Match with an additional positioning safety device, and with a safety switch, The upper and lower molds are safer and more reliable.

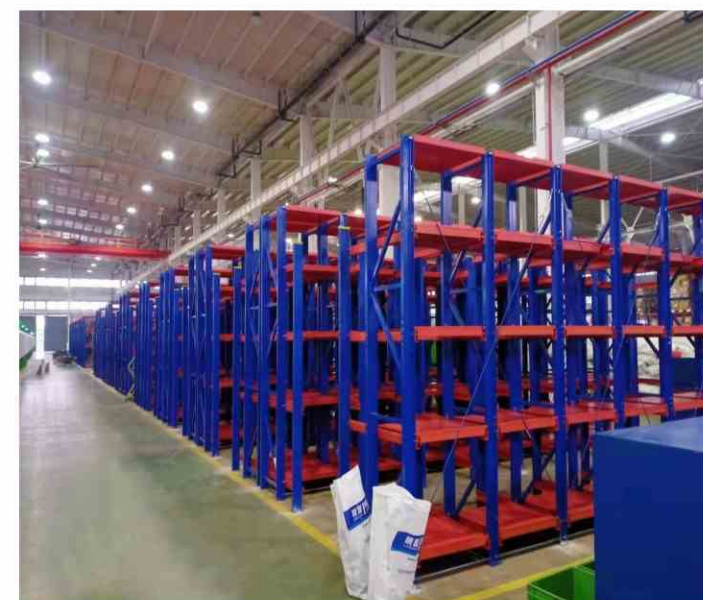
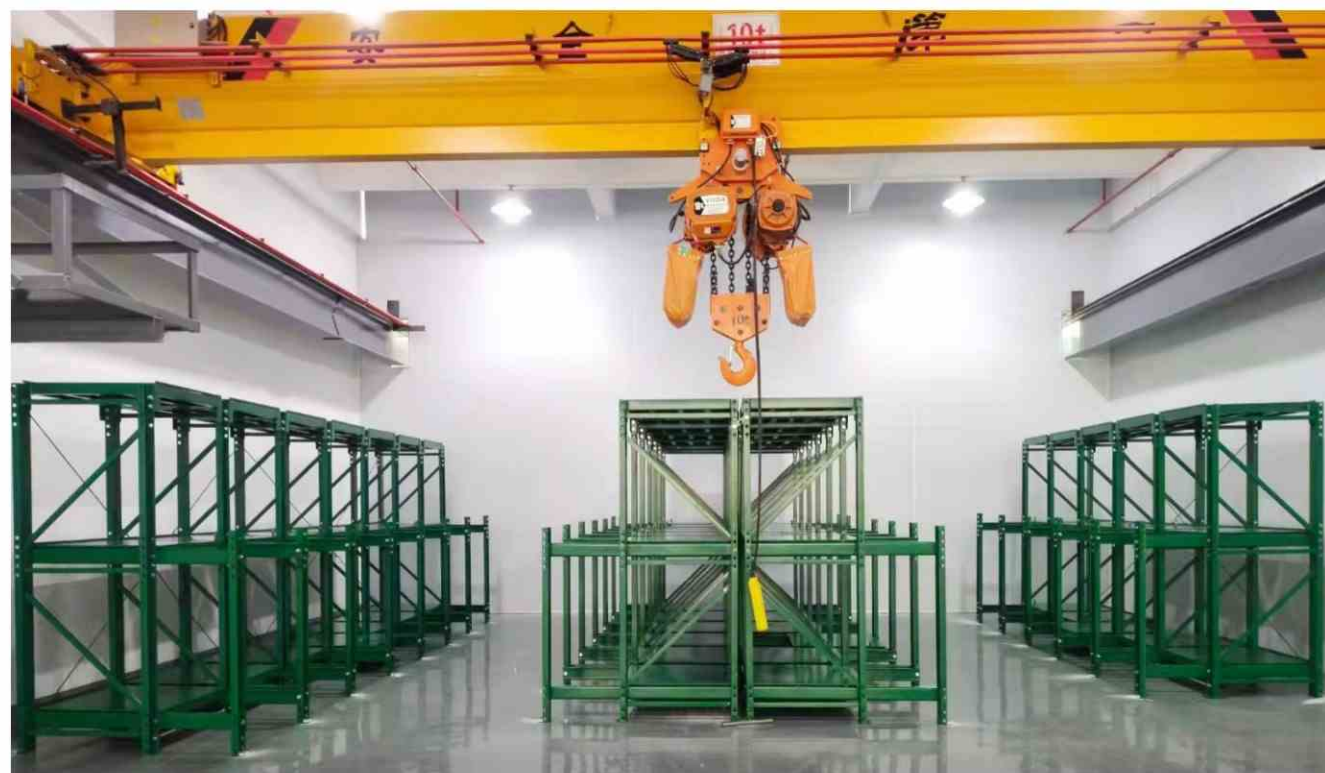
• 模具架主要用于存放各种模具、钢材、马达、发动机等重型物件；节省场地，占地面积仅为1.8平方米就可以存放几十套中小型模具，便于管理、寻找和保养；

• 抽屉式模具架采用轴承组合，每层每个抽屉可单独抽出60%-100%，每50mm可自由调节上下高度，每层抽屉可增减，格数无限量连接，

• 抽屉承重范围:200-3000kgs；

• 顶部配置左右移动天车架附加葫芦可独立吊模，无需大型行车或叉车，省时省力更加方便；由多种部件组装而成，结构简单，便于拆卸、运输和安装；

• 附加定位保险装置，并带安全开关，上下模具更加安全可靠。



Upright frame



Drawer



Safety switch



Crane

PLATFORM DOCK LEVELER

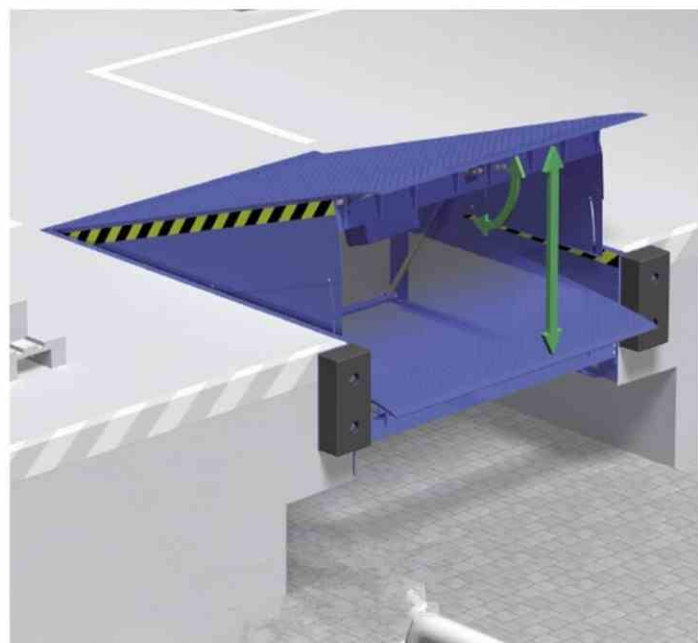
◎ 货台高度调节板

•Using the Platform dock leveler connected the platform with the truck flexibly and effectively, so that the handling tools can carry out loading and unloading operations smoothly.

•Greatly improving the loading rate, and improving the security of people and goods, which is now widely used by many large and medium-sized enterprises.

•利用此高度调节板,可灵活地将货台与货车有效地连接,使装卸搬运工具顺畅进行装卸作业。

•大大提高装卸率及加强人员和货品安全,现已被众多的大,中型企业广泛应用。



MOBILE BOARDING BRIDGE

◎ 移动登高桥

•The Mobile boarding bridge is used in loading and unloading platforms or different loading and unloading positions, and in small loading and unloading places, etc.

•To realize fast loading and unloading of goods. It uses a forklift and other transport vehicles to directly enter the truck without other power.

•It can be applied to various loading and unloading occasions;

•It adopts outrigger support and network steel plate structure, which has more reliable safety performance.

•移动式登车桥应用于装卸站台或装卸位置不同,以及装卸场地狭小等场合。

•实现了货物快速装卸。通过它使用叉车等搬运车辆直接进入货车,无需其它动力。

•能适用于各种装卸场合。

•采用支腿支撑和网络状钢板结构,有更可靠的安全性能。

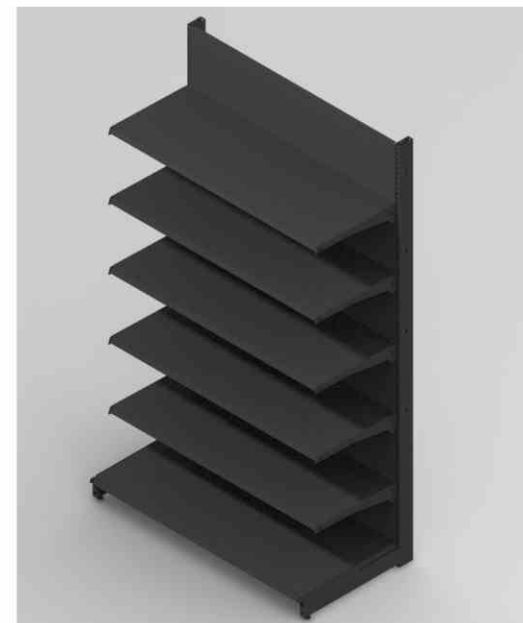


SUPERMARKET SHELF

◎ 超市货架

Standard Supermarket Shelf Size (mm)

Type 类型	长 (L)	宽 (W)	高 (H)	颜色 (Color)	承重/每层Load Capacity (kgs/layer)
Single-side 单面	700L	450W	1200	Semi gloss white / Gray/black	35 ~120kgs
Double-side 双面		850W	1500		
Single-side 单面	900L	450W	1800		
Double-side 双面		850W	2000		
Single-side 单面	1200L	450W	2200		
Double-side 双面		850W			



MOBILE FILE CABINET

◎ 移动密集柜

• It is suitable for the storage of fewer samples and more quantity and low frequency; it saves floor area and the usage rate is up to 80% or more; the storage efficiency is about 70%.

• The storage space can be adjusted freely; each item can be accessed directly without the limitation of first-in-first-out.

• Each shelf is equipped with a stop movement system to ensure the safety of items when accessing them; visually beautiful display configuration.

• Material racks can be locked side by side to achieve the effect of anti-theft storage; the load-bearing capacity of each layer of grids is within 100-300kgs.

• 适合少样多量，低频率的保管；节省地板面积，使用率高达80%以上；保管效率约70%左右。

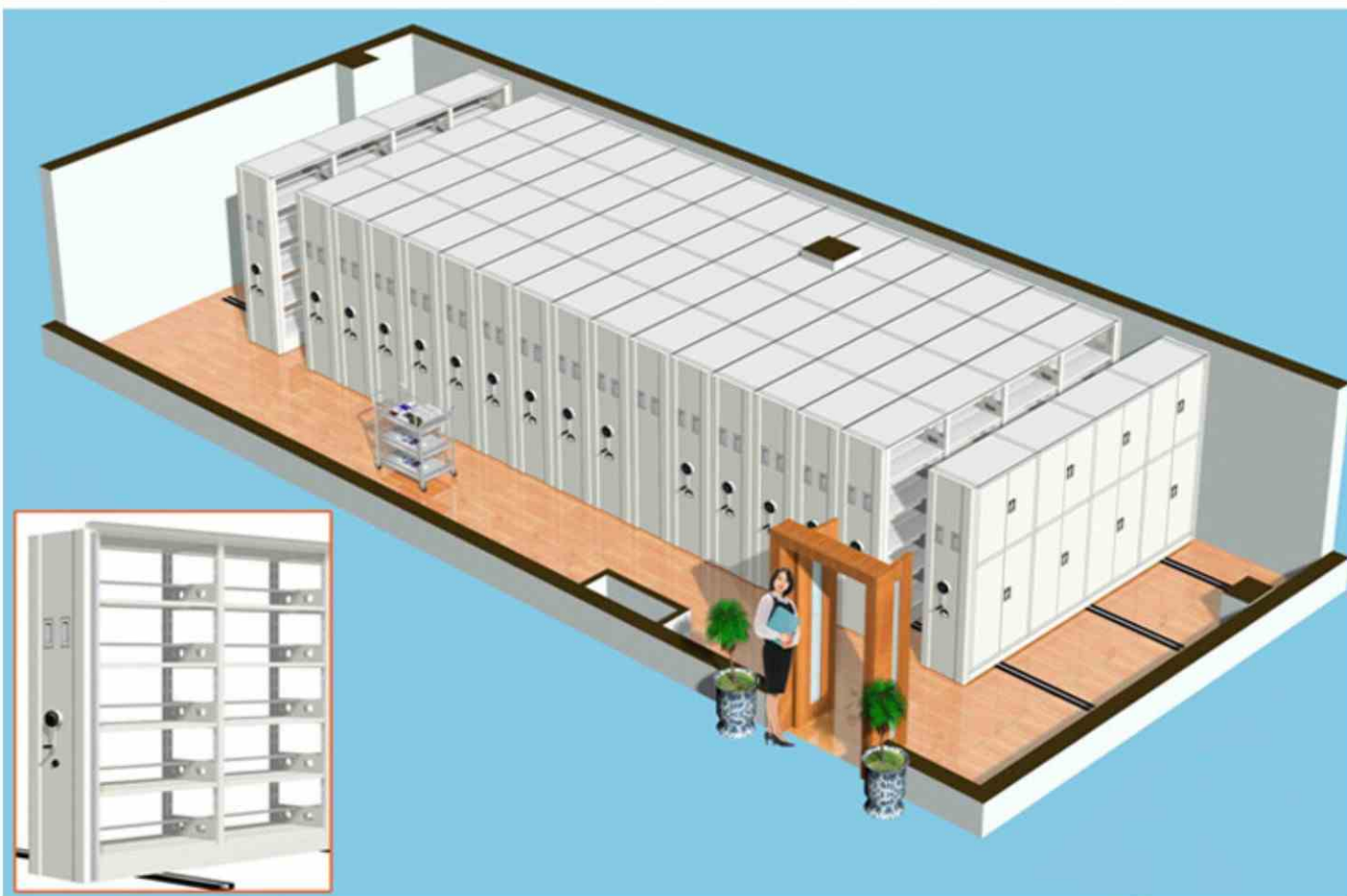
• 可自由调整存放空间；可直接存取每一项货品，不受先进先出之限；

• 每座料架皆装置停止移动系统，确保存取物品时之安全；视觉上美观的陈列配置；

• 料架可并列集中上锁，达到防盗保管之效用；每层格板承重100-300kgs之内。

3D场景图

Exclusive custom
专属定制



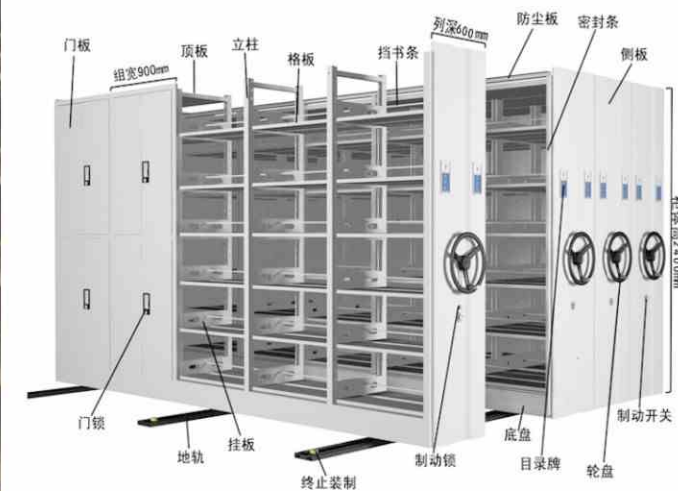
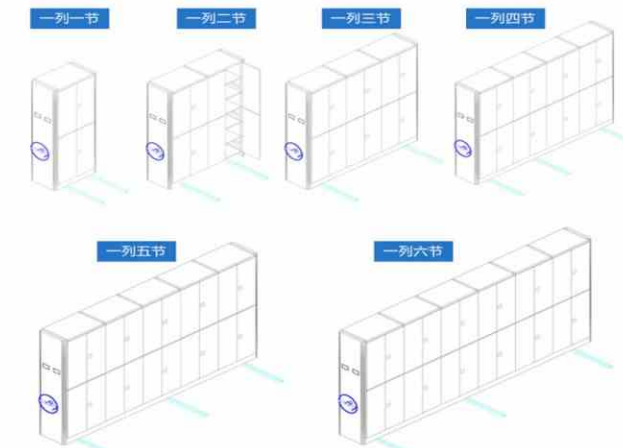
产品展示

Exclusive custom
专属定制



2D效果图

Exclusive custom
专属定制



BOOK SHELF

◎ 书架



Shelf connected with Post



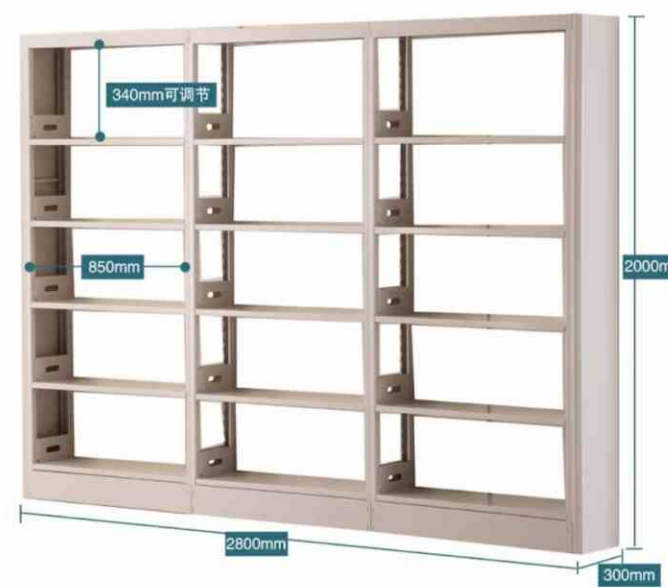
Steel Shelf



Post



Shelf connected with Post



合作客户 OUR CUSTOMERS >>>



RACK TEST

Photo:



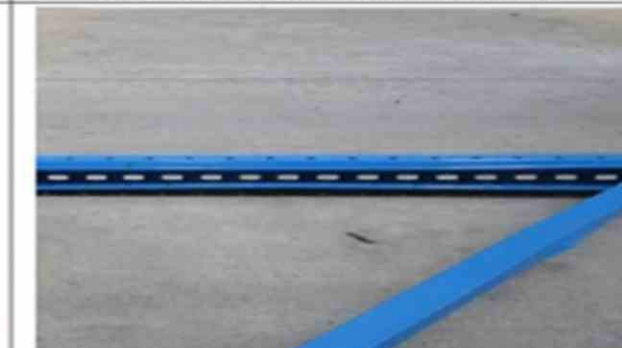
Before Stub column compression test



After Stub column compression test



Before Compression tests on uprights



After Compression tests on uprights

*****To be continued*****



Before Shear tests on beam end connectors and connector locks



After Shear tests on beam end connectors and connector locks



Before Bending tests on upright sections



After Compression tests on uprights

*****End of report*****



Certificate No.
10.16.1035

Date of Issue
09/01/2023

Valid From
09/01/2023

The Certificate is valid until
08/01/2028

CERTIFICATE OF CONFORMITY

FULLNESS EXAMINATION OF TECHNICAL FILE

Applicant (Name & Address)	ORION (Guangzhou) Intelligent Equipment Co., Ltd No. 3 East Shengli Road, Pingzhou Industrial Park, Guicheng, Nanhai District, Foshan City, Guangdong Province, China
Manufacturer (Name & Address)	Same as applicant
Test Report No.	LTR22032804503
Product Description	Warehouse Storage Racking System
Model(s)	LSS200620/4-3, LSS200620/4-5, LSS180624/5-5, LSS250940/3-10, LSS271260/4-20, SPR251045/3-10, SPR271130/2-20, SPR270960/3-30, SPR281090/5-30, SPR3010120/7-15, DPR159260/3-17, DPR1463110/6-12, DPR154290/5-10, DPR144272/4-15, DPR1473590/5-8 (See Annex for details)
Applicable Standard(s)	EN 15512:2020

This is to attest that, upon the relevant request of the above-mentioned applicant, EUROCERT S.A. as Third-Party Authority, has received, archived and proceed to the examination of the Technical Construction File of the above-mentioned product.

Note:

- All modifications to the Technical File should be first submitted to the Third-Party Inspection Authority to ensure further validity of this attestation.
- This certificate is valid only for the product and configuration described and in conjunction with the technical data detailed above.



Check the validity of the Certificate by scanning the QR code at right.
EUROCERT S.A. 89 Chlois & Lykovriseos str., 144 52, Metamorphosi – Greece
T +30 210 62.52.495, +30 210 62.53.927, F +30 210 62.03.018, M eurocert@otenet.gr



ANNEX TO

CERTIFICATE NO.: 10.16.1035

Technical Characteristics of Model

No.	Model	Size(mm)	Number of layers	Load capacity
Long Span Shelving/Racking (with solid steel decks)				
1	LSS200620/4-3	W2000*D600*H2000	4	300kg/layer
2	LSS200620/4-5	W2000*D600*H2000	4	500kg/layer
3	LSS180624/5-5	W1800*D600*H2400	5	500kg/layer
4	LSS250940/3-10	W2500*D900*H4000	3	1000kg/layer
5	LSS271260/4-20	W2700*D1200*H6000	4	2000kg/layer
Heavy Duty Selective Pallet Racking				
6	SPR251045/3-10	W2500*D1000*H4500	3	1000kg/layer
7	SPR271130/2-20	W2700*D1100*H3000	2	2000kg/layer
8	SPR270960/3-30	W2700*D900*H6000	3	3000kg/layer
9	SPR281090/5-30	W2800*D1000*H9000	5	3000kg/layer
10	SPR3010120/7-15	W3000*D1000*H12000	7	1500kg/layer
Heavy Duty Drive-in Pallet Racking System				
11	DPR159260/3-17	W1500xD(1150x8)×H6000	3	1700kg/pallet
12	DPR1463110/6-12	W1400xD(1050x6)×H11000	6	1200kg/pallet
13	DPR154290/5-10	W1500xD(1050x4)×H9000	5	1000kg/pallet
14	DPR144272/4-15	W1400xD(1050x4)×H7200	4	1500kg/pallet
15	DPR1473590/5-8	W1400xD(1050x7)×H9000	4	800kg/pallet



Check the validity of the Certificate by scanning the QR code at right.
EUROCERT S.A. 89 Chlois & Lykovriseos str., 144 52, Metamorphosi – Greece
T +30 210 62.52.495, +30 210 62.53.927, F +30 210 62.03.018, M eurocert@otenet.gr

